



Pacific Sun



# CalcFeeder PRO

## Controller for Calcium reactor

with stepper motor feeding pump

User Manual

ver. 2.0

[www.Pacific-Sun.eu](http://www.Pacific-Sun.eu)

# Table of Contents

- 1. Introduction ..... 3**
- 2. CalcFeeder PRO Controller ..... 4**
  - Controller Touch-Screen Operations ..... 5
  - Controller Maintenance ..... 6

# 1. Introduction

Dear Customer,

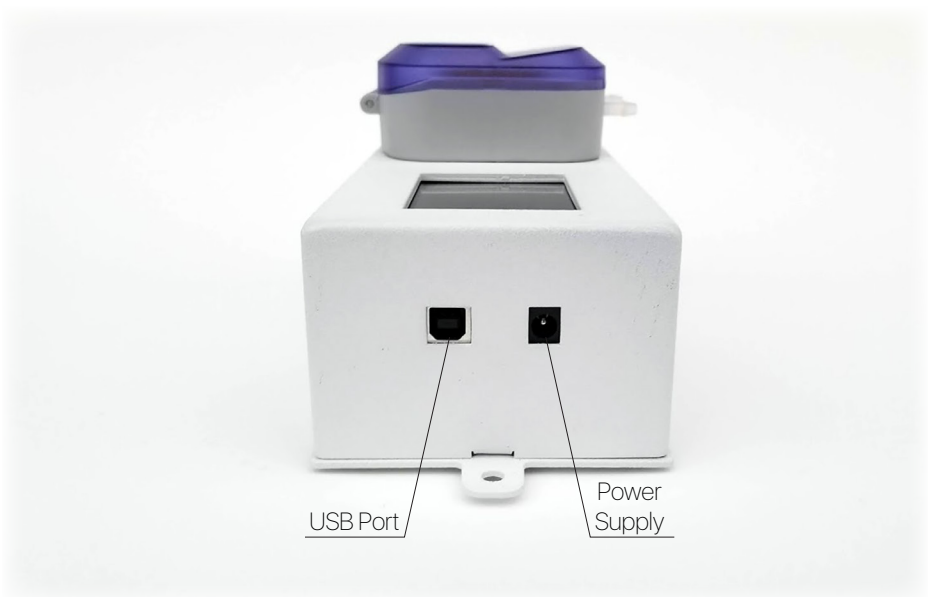
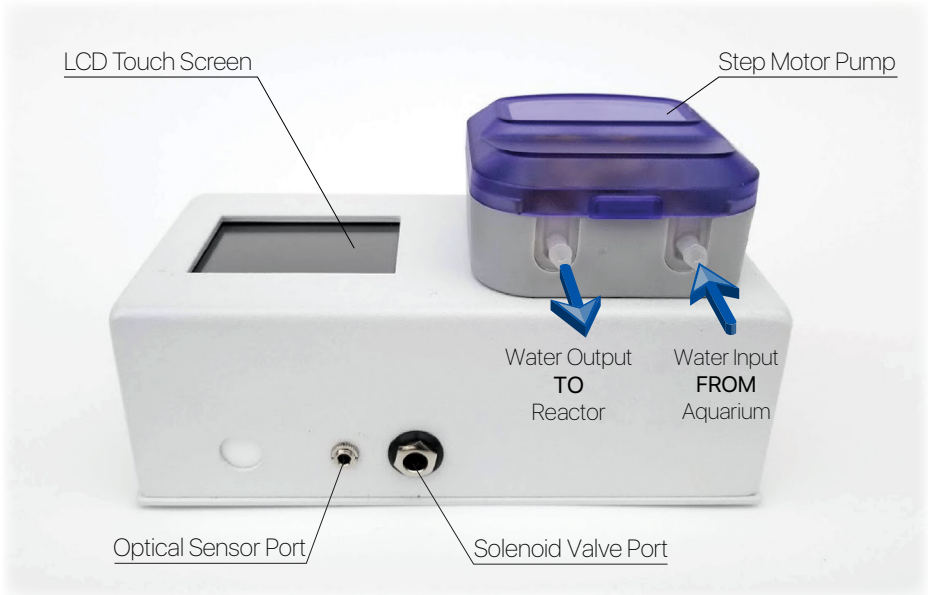
**Thank you for purchasing the Pacific Sun CalcFeeder PRO Controller.**

With the purchase of this unit, you have selected a top quality product. It has been specifically designed for aquaristic purposes and has been tested by experts. With this unit, you are able to adjust the calcium level as well as the carbonate hardness in your seawater tank simply and efficiently in order to achieve optimum levels.

For best results, please read through this instruction manual before installing the reactor on your system.

During or after installation, please do not hesitate to contact our technical support team at [service@pacific-sun.eu](mailto:service@pacific-sun.eu) if you have any questions about your new Controller.

## 2. CalcFeeder PRO Controller

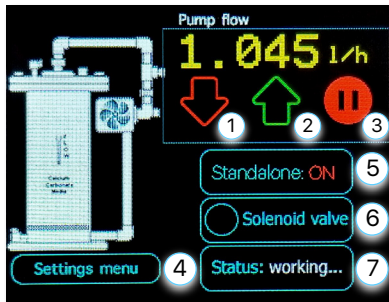


Controller unit was designed to work with CalcFeeder PRO calcium reactor but can be used also as a very precise feeding pump for any other Calcium Reactor brand (require turning the "**Standalone**" mode to **ON**).

The CalcFeeder PRO controller is equipped with ultra-precise Stepper Motor pump with four rollers. Built-in LCD touch-screen allows for very easy flow adjustments and controller operations. The Controller firmware updates can be performed by internal USB port.

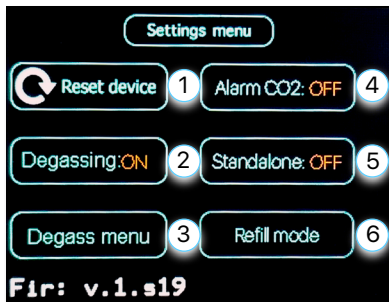
## Controller Touch-Screen Operations

### Main screen



- ① **Decreasing** flow effluent button.
- ② **Increasing** flow effluent button.
- ③ Dosing pump "**Pause**" button.
- ④ "**Settings menu**" button.
- ⑤ Optical sensor status indicator.
- ⑥ Solenoid valve status indicator.
- ⑦ Current controller status working mode indicator.

### Settings menu

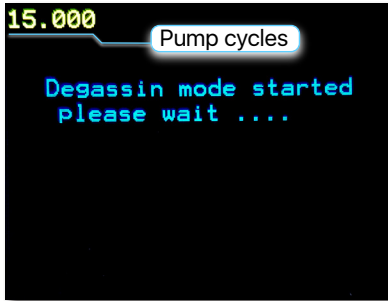


- ① Reset controller button.
- ② ON/OFF automatic "**Degassing**" button.
- ③ Automatic "**Degassing menu**" settings button.
- ④ ON/OFF automatic "**Alarm CO2**" tank button.
- ⑤ ON/OFF "**Standalone**" working mode button (when turn ON pump is running without connected optical sensor).
- ⑥ Reactor water **refills manual mode** enable button.

### Degass Menu

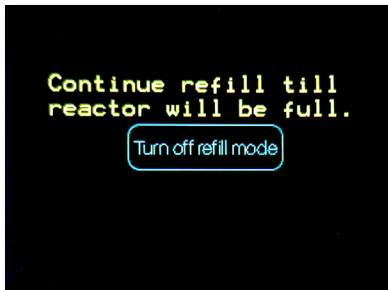


- ① Manual enable **degassing** button.
- ② Degassing setting **once per week**.
- ③ Degassing setting **twice per week**.
- ④ Degassing setting **every day**.
- ⑤ Degass Menu **Exit** button.



### Manual degassing screen

The controller **pump work cycles** are counted in the upper left corner. The degassing process takes **200** cycles.



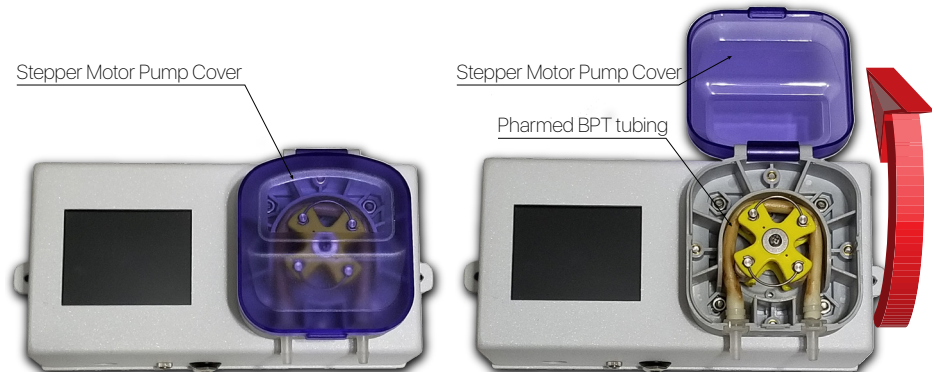
### Reactor manual water refills screen

In order to Turn OFF the refilling process, press and hold the „**Turn off refill mode**“ button for **3** seconds.

## Controller Maintenance

Stepper motor allows for heavy duty work **24/7** without any limits. The controller allows to set the rate at which calcium and carbonate are dosed in the tank from **100 ml/h to 7200 ml/h**.

Please remember about regular tubing inspections and maintenance. Used Pharmed BPT tubing has a **MTBF** (mean time before failure) of average **2000 hours** and needs to be replaced after that time. Regular lubrications by using silicone grease will extend tubing lifespan and protect device against leaking and damage.





*Pacific Sun*

If you need technical support - please contact with [service@pacific-sun.eu](mailto:service@pacific-sun.eu)

Copyright  
Pacific Sun Sp. Z o.o.  
I Brygady Panczernej WP 10  
84-200 Wejherowo  
Poland  
tel. + 48 58 778 17 17  
email: [office@pacific-sun.eu](mailto:office@pacific-sun.eu)