



*Pacific Sun*



# Kore 7th

Ultimate dosing station

WiFi Network Setup

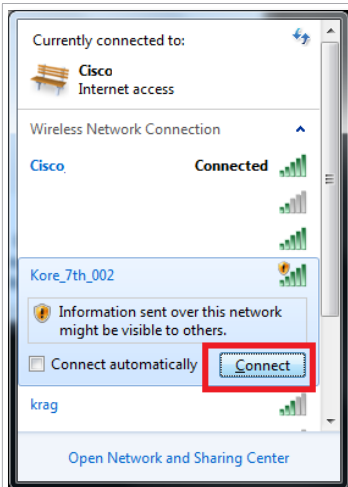
User Manual

ver. 2.2

Android / iOS interface

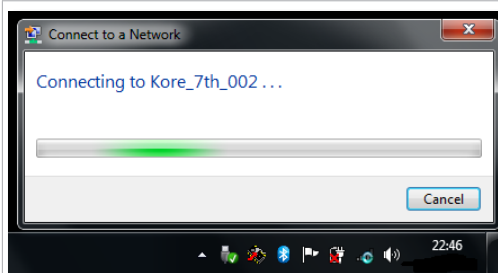
[www.Pacific-Sun.eu](http://www.Pacific-Sun.eu)

## Wi-Fi Network Protection Setup and Connection to Kore 7th

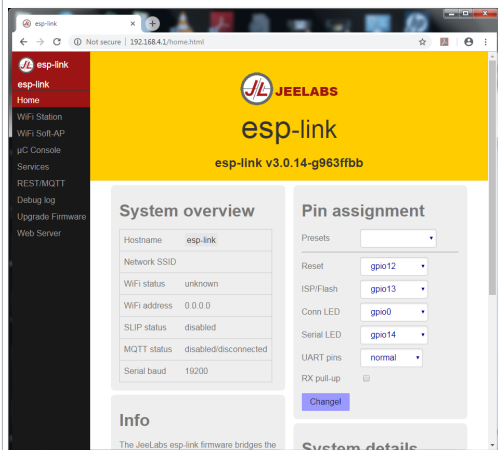


1. Find your **Kore7th** doser on your WiFi network list and click **Connect** to this network.

Select **Connect** to the Kore 7th Wi-Fi Network.



2. **Connecting** to the **Kore 7th Wi-Fi Network**.

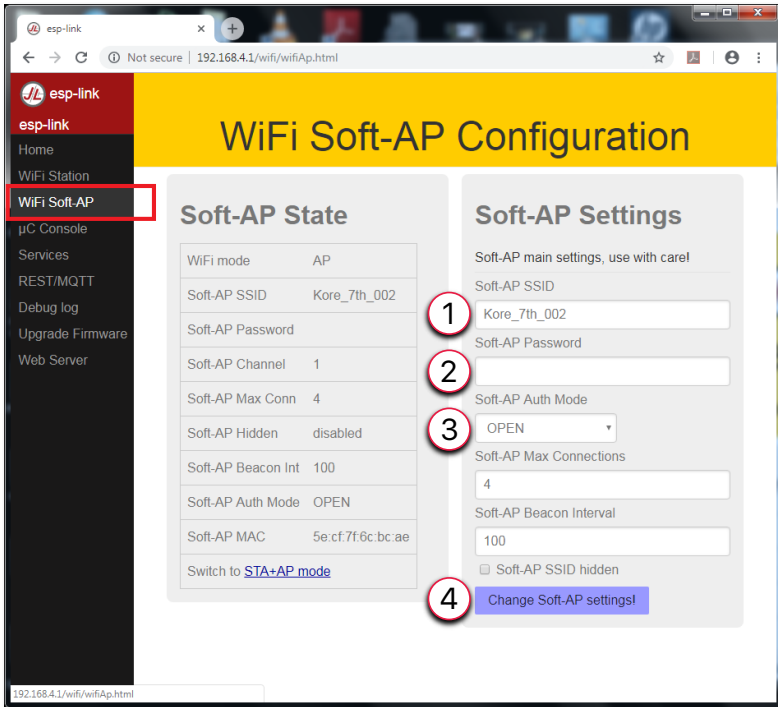


3. Open your Internet Browser (Chrome, Firefox, Safari, IE or other) and type the **Kore7th doser WiFi network IP address 192.168.4.1** into the address field.

If you are using IE, you might want to add **http://** to the address else IE may show an error.

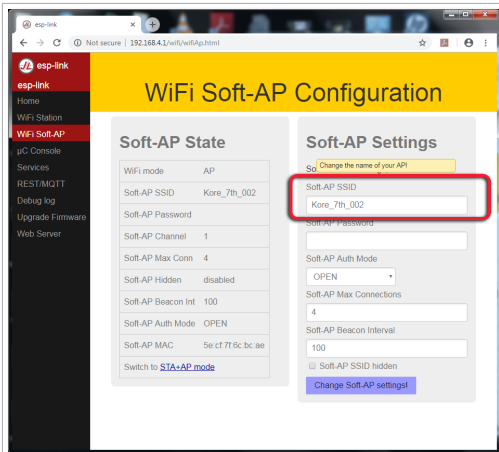
You should enter and see Kore 7th Wi-Fi network setup page like on this picture.

5. Navigate to **WiFi Soft-AP** Tab to setup/change your WiFi settings.  
You should see the following **Configuration** options:



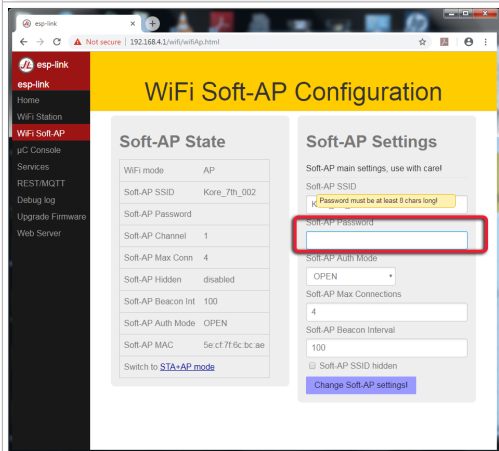
### WiFi Soft-AP Configuration

- ① **Soft-AP-AP SSID** allows to change the name of your doser WiFi network name.
- ② **Soft-AP Password** allows to setup password for Kore7th WiFi network access.
- ③ **Soft-AP Auth Mode** allows to change authentication mode (WiFi network Encryption).
- ④ **Change Soft-AP settings** allows to save settings.



6. You can change the **Kore7th doser WiFi network** name to your preferred name in the **Sof-AP SSID** field.

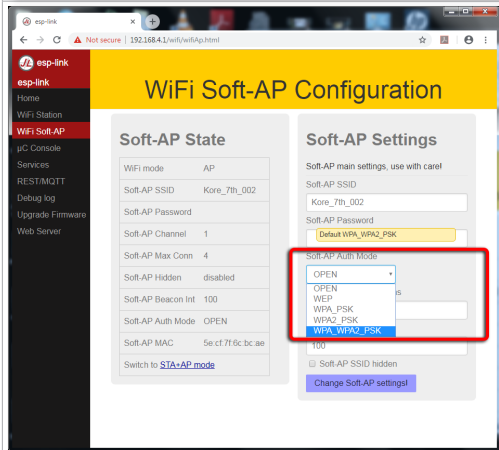
**Note:**  
You can leave the default manufacture name.



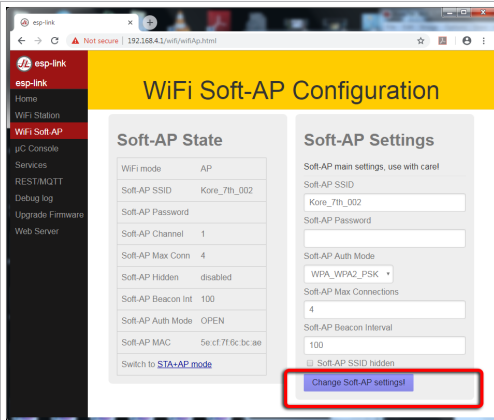
7. Setup **password** to secure your **Kore7th doser WiFi network** in the **Sof-AP Password** field.

**Important!**  
Password **must** be at least 8 characters long with capital letters and special characters.

Protect this **WiFi network** with a **STRONG** password!



8. **Change** the Authentication/ Encryption Mode from OPEN to **WPA\_WPA2\_PSK**.



## 9. Save all settings

Click **Change Soft-AP settings!**

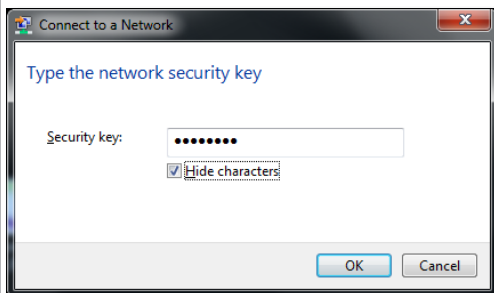
All the settings will be saved.

Now you can close your **Internet Browser**.

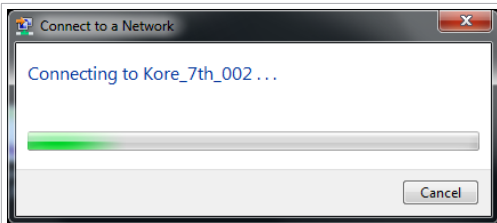
Your computer will be **disconnected** from this **Kore7th doser WiFi network**.



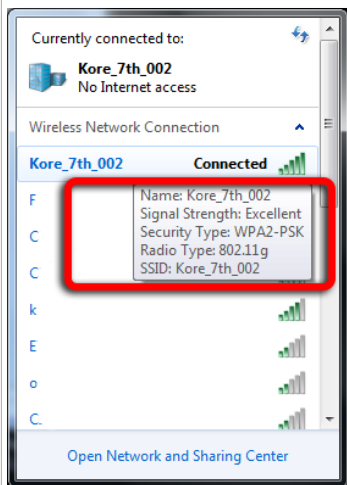
**10.** Navigate back to your **WiFi network list**, select your **Kore7th doser WiFi network** and click **Connect**.



**11.** Type your **Kore7th doser WiFi network** password in the **Security key** field.  
Next Click **OK**.



12. You should see:  
Connecting to your **Kore7th ....**

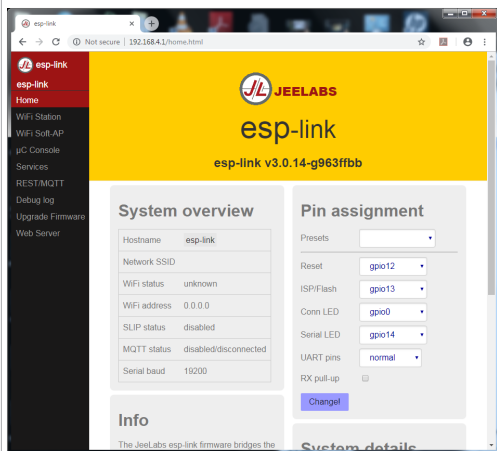


13. Now you are **Connected** to your **Secure** Kore7th Doser WiFi network.

### Important!

You should see the **Security Type:**  
**WPA2-PSK.**

If NOT, you have to go back to the **Kore7th doser WiFi network** settings web browser page and repeat the above steps.

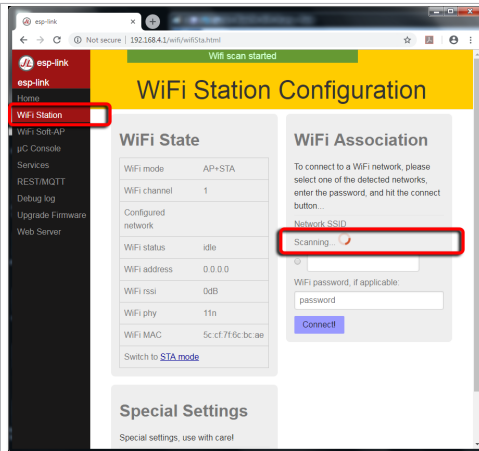


14. Open **again** the **Kore 7th Wi-Fi network setup**.

Open your Internet Browser (Chrome, Firefox, Safari, IE or other) and type the **Kore7th doser WiFi network IP address 192.168.4.1** into the address field.

If you are using IE, you might want to add **http://** to the address else IE may show an error.

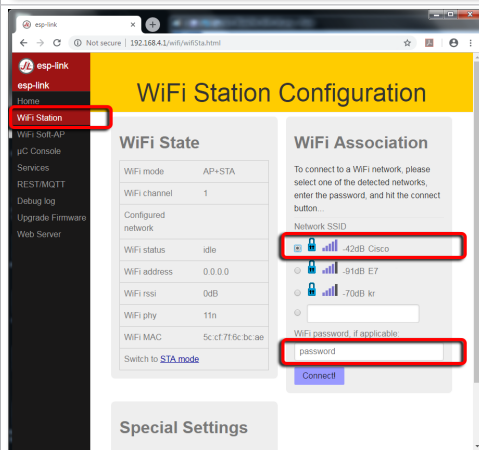
You should enter and see **again the Kore 7th Wi-Fi network setup** page like on this picture.



## 15. Go to **WiFi Station** settings.

Under **WiFi Association** you should see **Scanning** for available home WiFi networks.

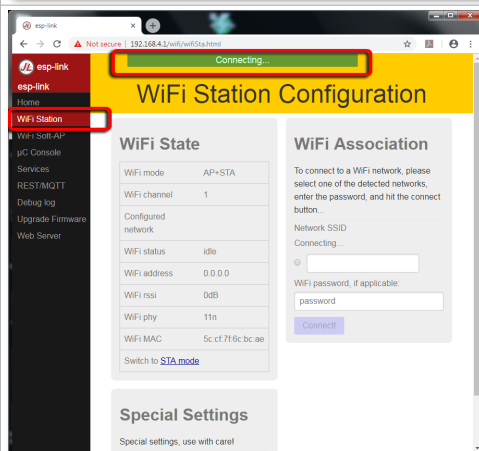
Start **Scanning** if didn't start.



## 16. Select your **Home WiFi** network under Network SSID.

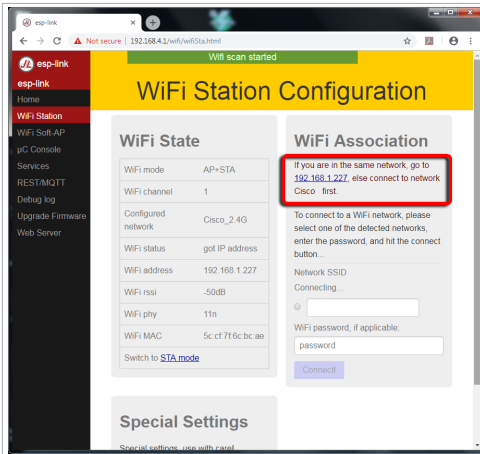
Type in your **Home WiFi** network in the **password** field under the **WiFi password, if applicable**.

Next Click **Connect**!



## 17. Wait until is **Connected**.

You should notice **Connecting ...** on the top of the window.



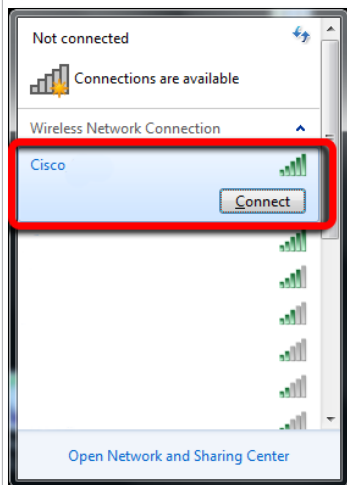
**18. The Connection is completed.**

Now your Kore7th doser is **connector** to your **Home WiFi network on a new IP address 192.168.1.227.**

**Note:**

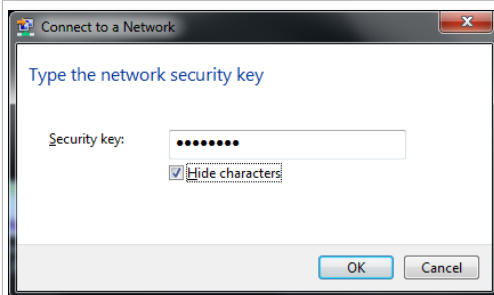
Your IP address **can be different**. This is just an example. Most likely each network setup will give a different IP address.

**Take a note** of this **NEW** IP address (your Kore7th dising station IP).



**19. Connect to your Home WiFi network.**

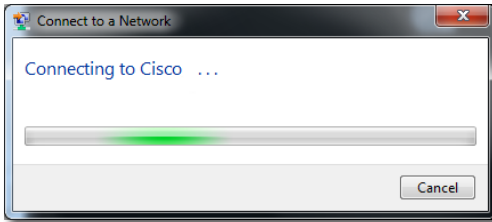
Find your **Home WiFi network** on your WiFi network list and click **Connect** to this network.



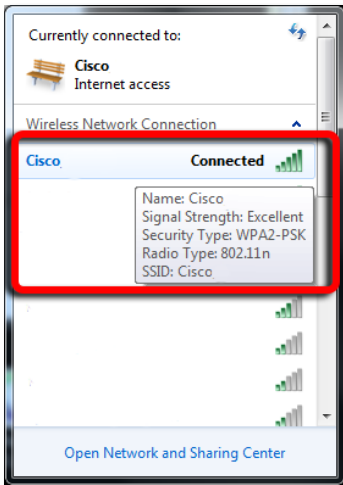
**20. If necessary, type your Home WiFi network password in the Security key field.**

Next Click **OK**.

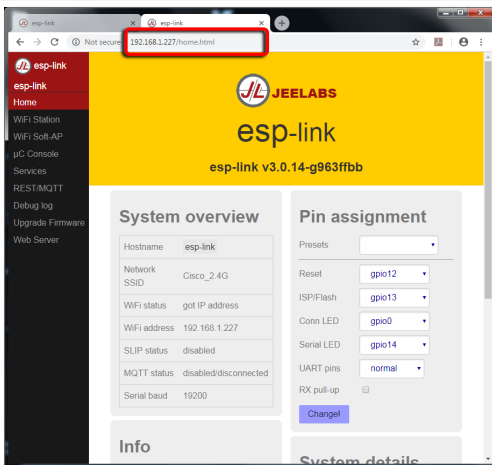




**21. Connecting to your Home WiFi network ....**



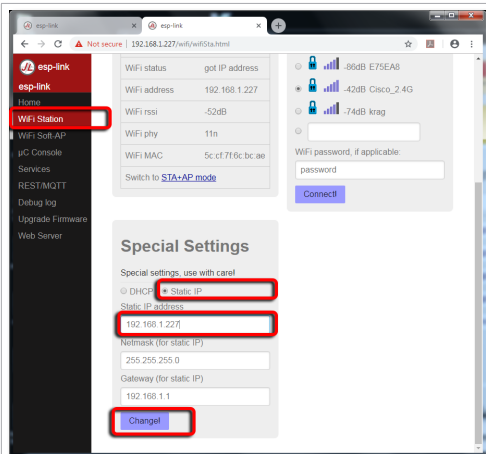
**22. Now you are Connected to your Secure Home WiFi network.**



**23. Open again your Internet Browser (Chrome, Firefox, Safari, IE or other) and type the Kore7th doser NEW IP address 192.168.1.227 into the address field.**

If you are using IE, you might want to add **http://** to the address else IE may show an error.

You should enter and see **Kore 7th Wi-Fi network setup** page like on this picture.



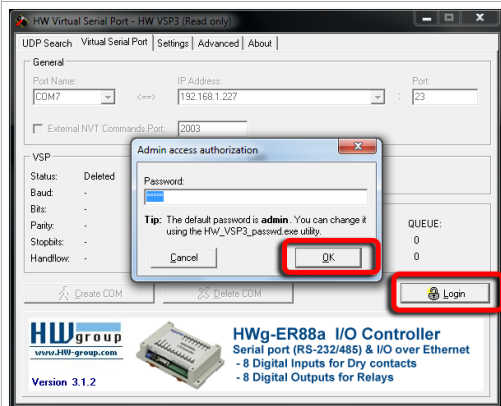
**24. Go to WiFi Station settings and scroll down to **Special Settings**.**

Select option: **Static IP**

Under **Static IP address** specify your **NEW Kore7th IP address: 192.168.1.227**

### Important!

When using **Static IP** you Kore7t IP address will not change after doser restart.

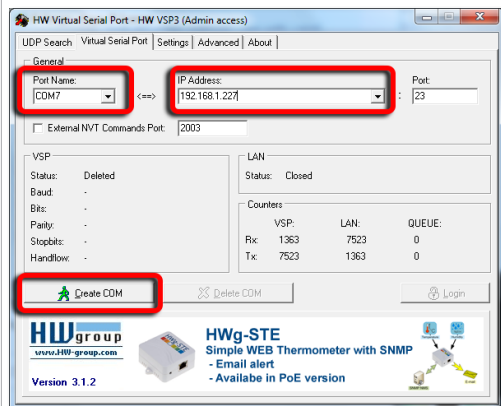


**25. Start the "HW Virtual Serial Port" software.**

All configuration settings in **HW VSP3** are password-protected.

To enter the password, press the **Login** button. The default password is **"admin"**.

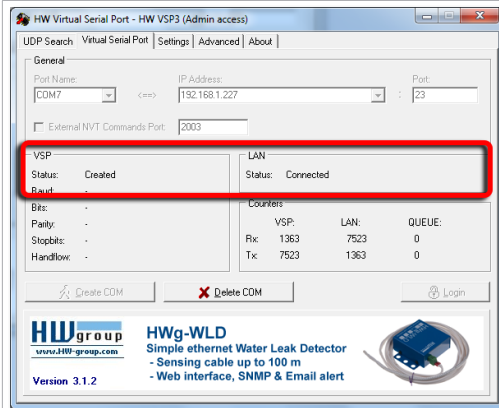
Next Click **OK**.



**26. Under Port Name Select, **NOT** used by any other device, **COM** port number.**

Under **IP Address** type in the Kore7th **NEW** IP address: **192.168.1.227**

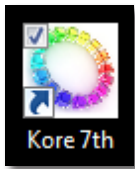
Next Click **Create COM**.



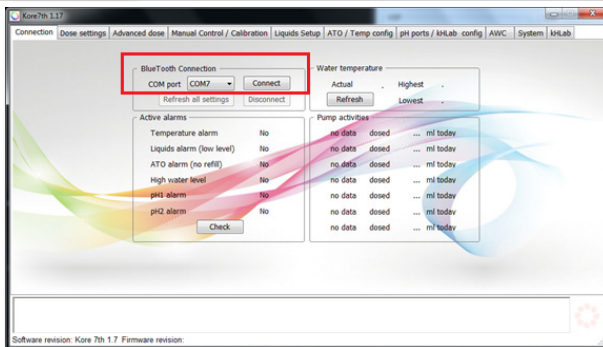
**27. HW VSP status will Change to **Created**.**

**LAN status will Change to **Connected**.**

After that you can open the **Pacific Sun Kore 7th Application**.



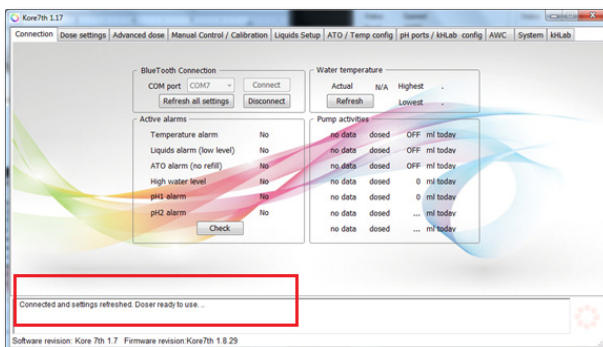
**28. Start the Pacific Sun Kore 7th Application.**



**29. After opening the Pacific Sun Kore 7th Application, select correct **COM port number** for your Kore 7th from the drop down (number from the HW VSP application) and click "**Connect**".**

**Note:**

You can also type the COM port in manually in the drop down.



**30. Kore 7th application will indicate "**Connected and settings refreshed. Doser ready to use ...**"**



If you need technical support - please contact with [service@pacific-sun.eu](mailto:service@pacific-sun.eu)

Copyright:  
Pacific Sun Sp. Z o.o.  
I Brygady Panczernej WP 10  
84-200 Wejherowo  
Poland  
tel. + 48 58 778 17 17  
email: [office@pacific-sun.eu](mailto:office@pacific-sun.eu)